

#4\_September 2023



# Precious Collective

## NEWSLETTER

\*Precious: adj 'of high cost or worth, not to be treated carelessly'



### IN MEMORIAM



### NEWS CALLS



### PRECIOUS COLLECTIVE MEMBERS NEWS HIGHLIGHTS



members can submit articles, exhibitions or a spotlight on their own practice, including up to 5 photos and approximately 150 words,

to: [precious.newsletter365@gmail.com](mailto:precious.newsletter365@gmail.com)





Ph. Carina Shoshtary

ATTAI CHEN

IN MEMORIAM

1979-2023

Born in Jerusalem in 1979,  
Attai Chen was not only a world renowned artist,  
but also a widely valued, cherished and missed  
human being.

Ph.Patti Bleicher  
Gallery Loupe



Ph.Patti Bleicher  
Gallery Loupe



Ph.Patti Bleicher  
Gallery Loupe

After receiving in 2006 a B.F.A. degree  
at the Bezalel Academy of Arts and Design of Jerusalem  
(Department of Jewelry & Fashion),  
in 2007 he moved to Munich, where he attended  
the Academy of Fine Arts, attaining  
a Meisterschüler diploma with Professor Otto Künzli  
- Class for Jewellery and objects - in 2012.

Following, some of his thoughts about jewelry  
and his relationship with materials (excerpts from a  
Conversation with Doris Maninger - full version [HERE](#) on  
Alchimia Contemporary Jewellery School website)



“I did not want to study at the Fine Arts Department. At the time it was too conceptual for me and too distant from the actual work with materials. I believed that the real excitement was taking place at the crafts departments. I knew I was attracted to something that had to do with technical and material understanding. So I applied to the Ceramics and Jewellery Departments (...)”

“(...) in the end the best way to describe myself would be a maker, as right now I am working with my hands physical materials (...),



Ph. Patti Bleicher  
Gallery Loupe

“(...) anything can be jewellery if it is made in a good and convincing way, and if it communicates with the field”

“So in this case (the graduation work in Bezalel) the head started the process, while after the hands and the experience with the actual material took over.

In a sense I quite often work with this method; first creating my own “raw material” then cutting it and creating with it structures. Working first without a clear and defined idea of how it should be shaped or into what it should evolve.



The pieces grow from the actual active dialogue that develops while working, I bring ideas, fillings, references and the material brings its unique characteristics”

“I think that for me jewellery represents a challenge that exists in a triangular relationship: investigation of the material and craftsmanship, artistic ideas & emotions and the human body”



Dr. Patti Bleicher  
Gallery Loupe

“Jewellery is a form of communication, an object that relates in most of the cases to the human body.

Some are wearable some are not, they all relate to the body by their definition.

However, most of the time they are not worn, they do have an independent life.

In some cases this means that the pieces can act as objects if they are being treated as such.

The fascinating thing about jewellery is that some of the pieces do exist in this dual form,

they appear in one form while shown independently and in another when they are worn”



AdOC - CALL  
VIII Contemporary  
Goldsmithing Exhibition  
(src Ani Flys)

The VIII Contemporary Goldsmithing Exhibition will take place at the Museo Nacional de Artes Decorativas of Madrid within the Madrid Design Festival, simultaneously with the Semana del Arte-ARCO. Singular exhibitions in the main museums in Madrid complete a tour around the city.

The exhibition has an international nature, allowing contemporary goldsmiths and jewel designers from every nationality to participate.

Artists may submit up to 5 separate finished artworks (or a collection of pieces belonging to a set).

The Jury will select a maximum of 3 pieces by each designer to be exhibited, corresponding to the categories of Contemporary Goldsmith and/or Jewellery.

All pieces must be singular or limited series. All materials are acceptable, but at least 25% must be made or plated in fine metals.

DEADLINE: September 21st

More info [HERE](#)





## ROMANIAN JEWELRY WEEK

4th - 8th October 2023

Precious Collective is part of ROJW 4th edition, with "Beyond the Recognisable", a ten works showcase by ten different members, promoting an anthology of thinking towards the act of making.

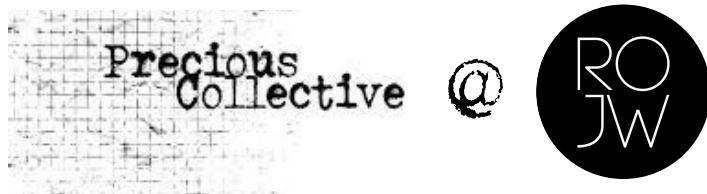
These works represent the potency of material thinking in jewellery languages that excavate notions of process, materiality and potential of transformation once worn.

Beyond the recognisable and past the wearable archetypes are intimate actions of making, makers marks and individual stories that speak through the tangible poetic configurations.

The found object speaks to the reclaimed metal, the fable is retold within ceramics, the colour has a conversation to composition and the jewel represents its maker

(words credit: Mark Mcleish)





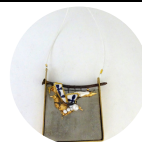
Agnes Wo



Carolina Apolonia



Claude Lescar



Dongyi Wu



Elvira Cibotti



Katherine Hubble



Katie Kameen



Lynne Speake



Mark Mcleish

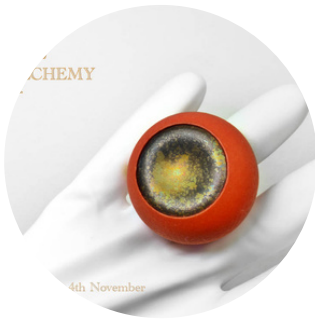


Svetlana Prigoditch



Romanian Jewelry Week is an international event organized by Assamblage National Jewelry Association, dedicated to the contemporary jewelry field in Romania and worldwide since 2020.





## CLODAGH MOLLOY

[www.instagram.com/clodagh.molloy/](http://www.instagram.com/clodagh.molloy/)

[www.clodaghmolloy.com](http://www.clodaghmolloy.com)

“I am attending Contemporania Fair  
as an Enjoia't winner from last year.

My work for Contemporania Fair  
is my 'Shared Stories' Series.

'Shared Stories' is my growing collection of jewellery  
and body adornments that examines and initiates  
a dialogue around the subject of mental ill health.

Through the collecting of personal accounts,  
I can address the stigma and highlight the strength,  
needed to come through or live with mental illness”







“Also opening on September 15th is the Exhibition  
‘Awe & Alchemy’ in the Marketplace Theatre and Arts  
Centre, Armagh, Co. Armagh.

My work for ‘Awe & Alchemy’ are large body adornments  
made from Gold PLA as a play on the myth of King Midas  
and the sounds of time passing.

Visitors to the exhibition will be able to touch, feel  
and lift the body adornments. Lifting the oversized neck  
piece awakens the sound of the false gold links and  
beads.

These pieces were computer designed and 3d printed.  
Brooch backs attached and finished with traditional  
goldsmithing hand skills”





## PAULETTA BROOKS

[www.instagram.com/pbwearableart/](http://www.instagram.com/pbwearableart/)

[www.paulettabrooks.com](http://www.paulettabrooks.com)

“Many years ago, with my hand being placed into a molded splint, I discovered the versatility of using medical supplies for my art.

Thus, the discovery of working with ‘thermoplastic resin mesh’.



This material, available in various weights, strengths, and resiliencies, is one of several used in the medical industry as well as the theater industry for props and masks.

(It is NOT for the faint of heart and takes quite a bit of trial and error to master using it!)

Its thermal properties allow it to become soft and malleable when heated, then solid and flexible once cooled.



It allows me to form a foundation and structure  
for the stones and minerals that I use  
and allows me to re-purpose a man-made material  
in an environmentally sound way.



As for the minerals!! ...  
We all know that art can be found anywhere,  
sometimes in the most unlikely of places.

When it comes to nature however,  
we find art in its most original form.  
Unpredictable, abstract, and intricate,  
are a few words I might use to describe  
the beauty and artistry formed  
by Mother Earth.

In creating my own pieces for Pauletta  
Brooks Wearable Art, I've always  
appreciated the diversity of patterns,  
colors and textures found in raw minerals:  
the unassuming rock, when opened,  
reveals a crystalline world inside  
the wonderful Geode; Crystals, each  
uniquely shaped and extruding from their surroundings,  
become ice-like sculptures; and the spectrum of  
intense colors as seen in minerals  
such as Emerald and Amethyst, all perform for our  
visual and wearable pleasure.

